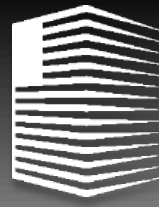
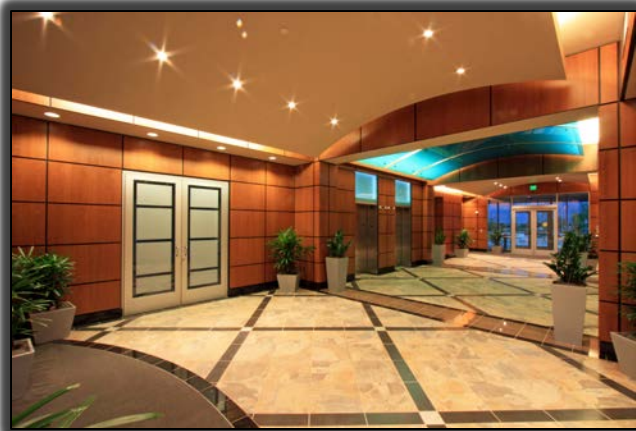


**PATRIOT PARK VII**  
565 Space Center Drive  
COLORADO SPRINGS, CO 80915



**PATRIOT**  
EQUITIES

**AVAILABLE FOR LEASE**



**Peter Scoville**  
Principal  
(719) 418-4063  
pscoville@coscommercial.com

**Greg Phaneuf**  
Principal  
(719) 418-4064  
gphaneuf@coscommercial.com



**CUSHMAN &  
WAKEFIELD**

**Colorado Springs  
Commercial**

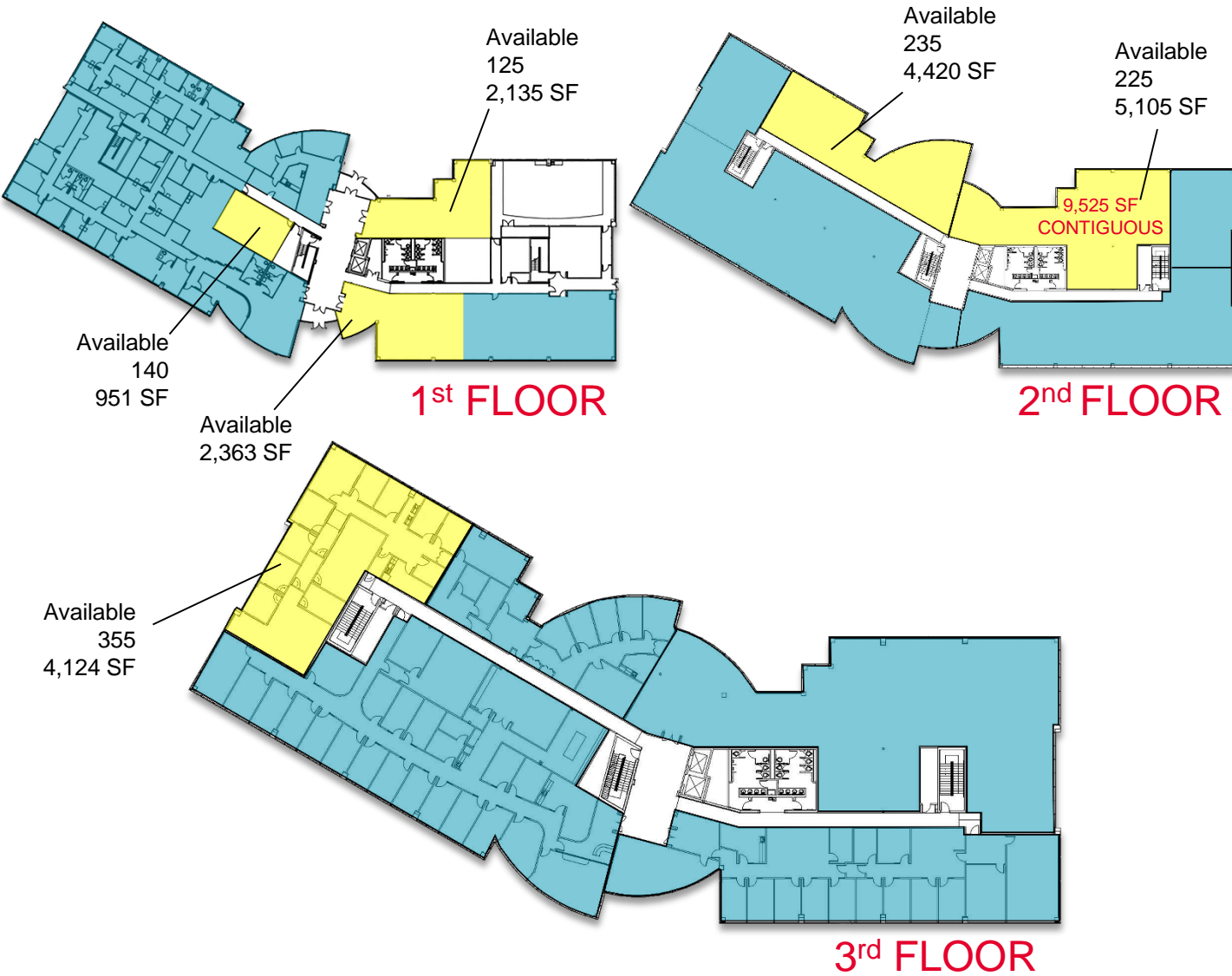
# PATRIOT PARK VII

## 565 Space Center Drive

COLORADO SPRINGS, CO 80915



**PATRIOT**  
EQUITIES



### BUILDING FEATURES

### BUILDING QUALITIES

BUILDING SIZE	89,624 RSF
AVAILABLE SPACE	951-9,525 RSF
LEASE RATE	From \$17.00 per RSF NNN
EXPENSES	\$8.25 per RSF (2018 estimate)
TENANT IMPROVEMENTS	Negotiable
PARKING	4 spaces per 1,000 RSF
YEAR CONSTRUCTED	2009

- Located in Patriot Park, the preeminent government contractor business park in Colorado Springs.
- Adjacent to Peterson AFB – easy access to north and west gates.
- Within ten minutes of Colorado Springs Airport.
- Restaurants, hotels, banks and full array of amenities in close proximity.
- Common conference facility and building workout room with showers and lockers.

Peter Scoville  
Principal  
(719) 418-4063  
pscoville@coscommercial.com

Greg Phaneuf  
Principal  
(719) 418-4064  
gphaneuf@coscommercial.com



**Colorado Springs**  
Commercial