

**BUILDING FEATURES**

<b>BUILDING SIZE</b>	79,313 RSF
<b>AVAILABLE SPACE</b>	Suite 100: 759 RSF Suite 250: 5,933 RSF
<b>FLOOR PLATE SIZE</b>	26,437 RSF
<b>NUMBER OF LEVELS</b>	3
<b>LEASE RATE</b>	\$14.50 psf NNN
<b>EXPENSES</b>	\$9.43 per RSF (2018 est.)
<b>TENANT IMPROVEMENTS</b>	Negotiable
<b>PARKING</b>	5 spaces per 1,000 RSF – Potential for 6/1,000
<b>YEAR CONSTRUCTED</b>	1985 & 2016 (Lobby renovations and spec suite completion)
<b>INTERNET/FIBER</b>	Xfinity/Century Link

For more information, please contact:

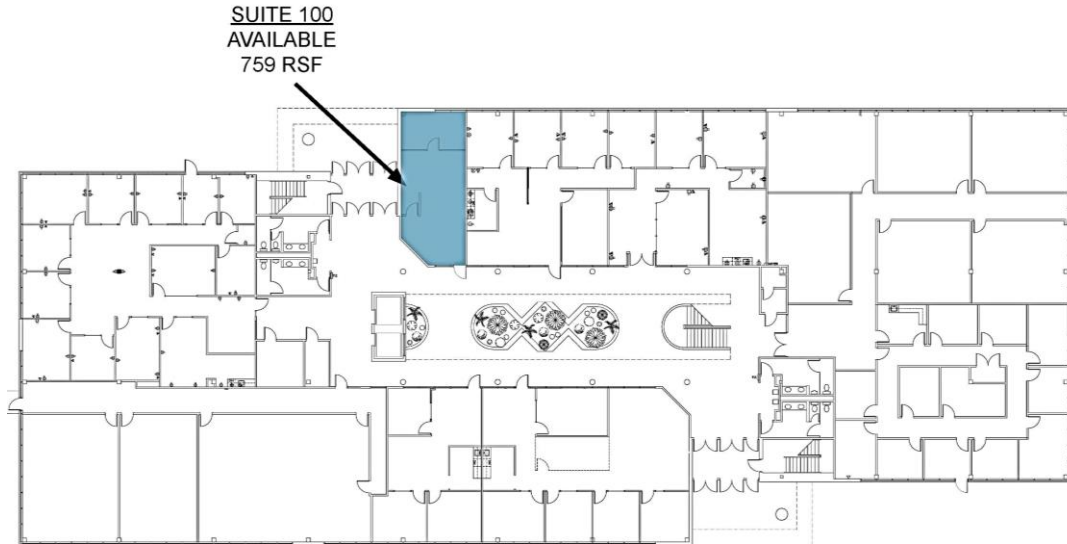
**Greg Phaneuf**  
**Principal**  
 +1 719 418 4064  
 gphaneuf@coscommercial.com

**Peter Scoville**  
**Principal**  
 +1 719 418 4063  
 pscoville@coscommercial.com

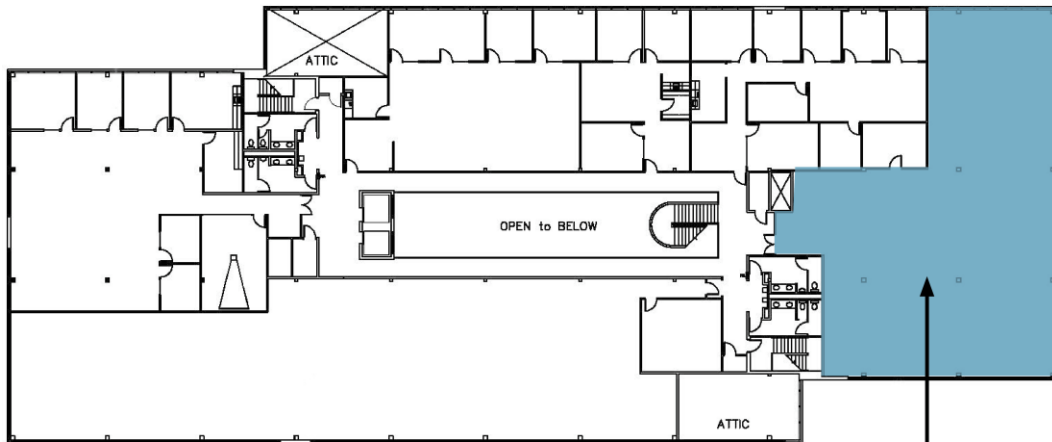


Colorado Springs Commercial  
 2 North Cascade Avenue, Suite 720  
 Colorado Springs, CO 80903  
 phone: +1 719 634 1500  
 coscommercial.com

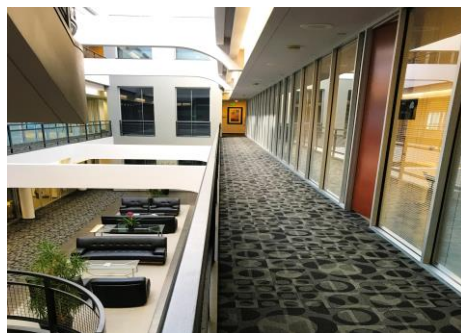
**1st Floor**



**2nd Floor**



SUITE 250  
AVAILABLE  
5,933 RSF



For more information, please contact:

**Greg Phaneuf**  
Principal  
+1 719 418 4064  
gphaneuf@coscommercial.com

**Peter Scoville**  
Principal  
+1 719 418 4063  
pscoville@coscommercial.com



Colorado Springs Commercial  
2 North Cascade Avenue, Suite 720  
Colorado Springs, CO 80903  
phone: +1 719 634 1500  
coscommercial.com