

**FOR LEASE**



## Property Features

Located in the Garden of the Gods Corridor, Garden Park is a conveniently situated office/warehouse property with access to Garden of the Gods Rd. and I-25.

- Professionally maintained and managed property
- 16' Clear Height
- 10'x12' Overhead Door
- Three Phase Power
- End Unit with lots of natural light
- Approximately 40% Warehouse 60% Office

### Property Details

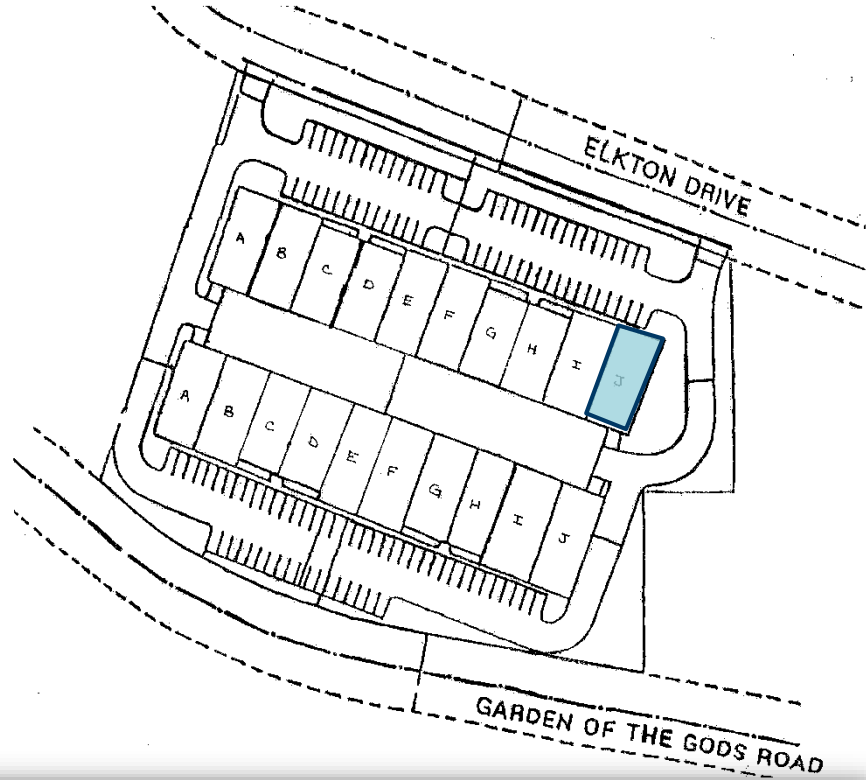
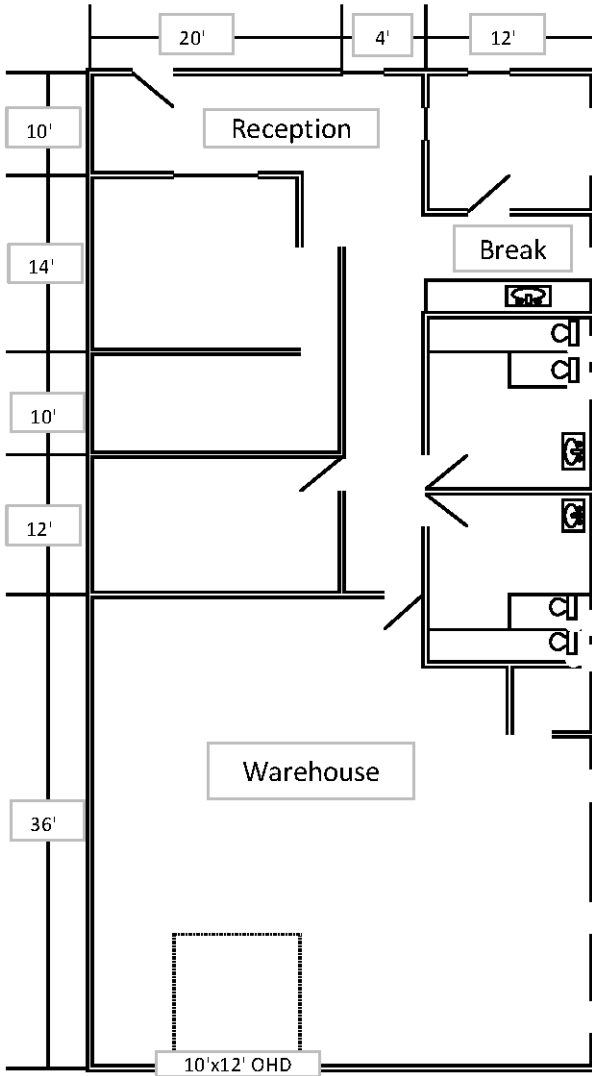
<b>BUILDING SIZE</b>	57,009 SF
<b>AVAILABLE SPACE</b>	2,880 SF
<b>LOT SIZE</b>	3.63 +/- Acres
<b>ZONING</b>	PIP-2
<b>LEASE RATE</b>	\$7.50/ SF NNN
<b>NNN EXPENSES</b>	\$3.00SF (Est. 2017)

**Aaron L. Horn**  
 Managing Director  
 +1 719 418 4070  
[ahorn@coscommercial.com](mailto:ahorn@coscommercial.com)

**David Bacon**  
 Senior Managing Director  
 +1 719 418 4068  
[dbacon@coscommercial.com](mailto:dbacon@coscommercial.com)

2 N. Cascade Avenue, Suite 520  
 Colorado Springs, CO 80903  
 phone: +1 719 634 1500  
[coscommercial.com](http://coscommercial.com)

1110 Elkton Suite J - 2,880 SF



\* All Measurements Approximate

Property Details	
<b>BUILDING SIZE</b>	57,009 SF
<b>AVAILABLE SPACE</b>	2,880 SF
<b>LOT SIZE</b>	3.63 +/- Acres
<b>ZONING</b>	PIP-2
<b>LEASE RATE</b>	\$7.50/ SF NNN
<b>NNN EXPENSES</b>	\$3.00/SF (Est. 2017)

*For More Information Please Contact:*

**Aaron L. Horn**  
**Managing Director**  
 +1 719 418 4070  
[ahorn@coscommercial.com](mailto:ahorn@coscommercial.com)

**David Bacon**  
**Senior Managing Director**  
 +1 719 418 4068  
[dbaon@coscommercial.com](mailto:dbaon@coscommercial.com)

2 N. Cascade Avenue, Suite 520  
 Colorado Springs, CO 80903  
 phone: +1 719 634 1500  
[coscommercial.com](http://coscommercial.com)