



Colorado Springs
Commercial

Adobe Court Business Park

3302-3372 ADOBE COURT COLORADO SPRINGS, CO 80907

- LEASE RATE:** \$11.50/SF/YR NNN
- NNN:** \$3.25/SF (2025 Est.)
- CLEAR HEIGHT:** 18'
- DOORS:** (1) 10'x12' Drive-In Doors
- PARKING:** 1/1,000 RSF
- ZONING:** M-1
- SIGNAGE:** On building signage available



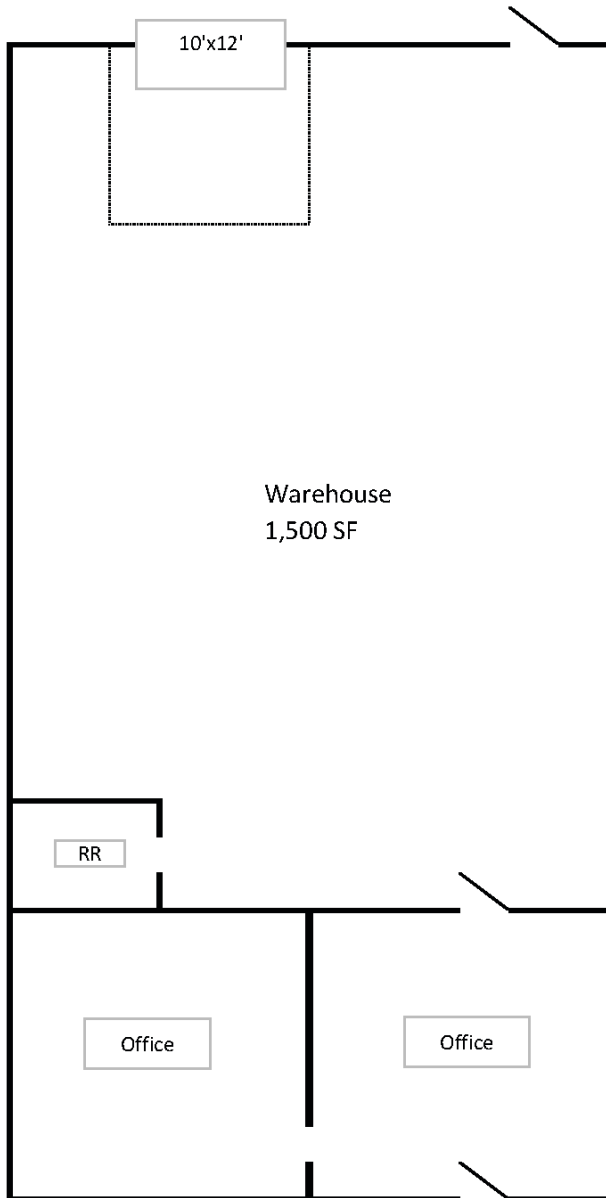
#3344
1,750 SF



FOR LEASE
AARON HORN
634-1500

Floor Plan

SUITE 3344
1,750 SF AVAILABLE



*For representative purposes only - drawing not to BOMA.



FOR MORE INFORMATION, CONTACT:



**CUSHMAN &
WAKEFIELD**

**Colorado Springs
Commercial**

AARON HORN

Sr, Managing Director
+1 719 418 4070

ahorn@coscommercial.com

HEATHER MCKEEN

Director
+1 719 418 4062

hmckeen@coscommercial.com

©2025 Cushman & Wakefield. All rights reserved. The material in this presentation has been prepared solely for information purposes, and is strictly confidential. Any disclosure, use, copying or circulation of this presentation (or the information contained within it) is strictly prohibited, unless you have obtained Cushman & Wakefield's prior written consent. The views expressed in this presentation are the views of the author and do not necessarily reflect the views of Cushman & Wakefield. Neither this presentation nor any part of it shall form the basis of, or be relied upon in connection with any offer, or act as an inducement to enter into any contract or commitment whatsoever. NO REPRESENTATION OR WARRANTY IS GIVEN, EXPRESS OR IMPLIED, AS TO THE ACCURACY OF THE INFORMATION CONTAINED WITHIN THIS PRESENTATION, AND CUSHMAN & WAKEFIELD IS UNDER NO OBLIGATION TO SUBSEQUENTLY CORRECT IT IN THE EVENT OF ERRORS.