



#1120F
2,880 SF
OFC/WHS

GARDEN PARK INDUSTRIAL

1110-1120 ELKTON DR.
COLORADO SPRINGS, CO 80907



CUSHMAN &
WAKEFIELD

Colorado Springs
Commercial

2,880 SF OFC/WHS
AVAILABLE NOW



PROPERTY FEATURES

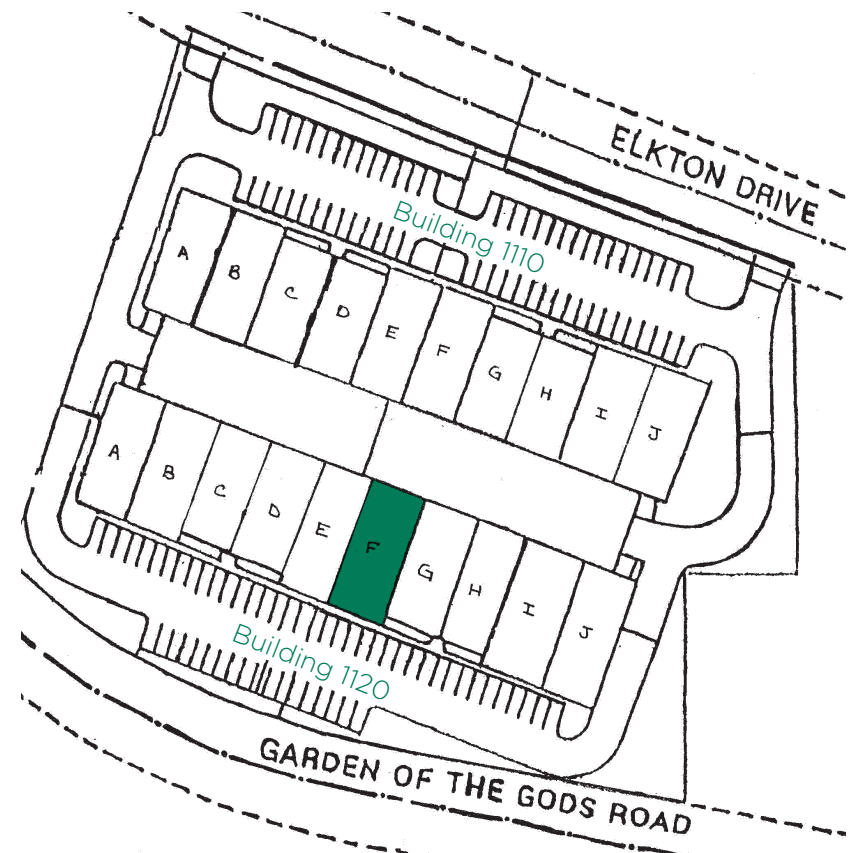
BUILDING SIZE	57,009 SF
PARKING	1.8/1,000 RSF
LEASE RATE	\$12.00/SF/YR NNN
NNN EXPENSES	\$4.50/SF (2025 EST.)
CLEAR HEIGHT	16'
DOORS	(1) 10'X12' DRIVE-IN PER BAY
ZONING	PIP2

**AVAILABLE
SPACE**

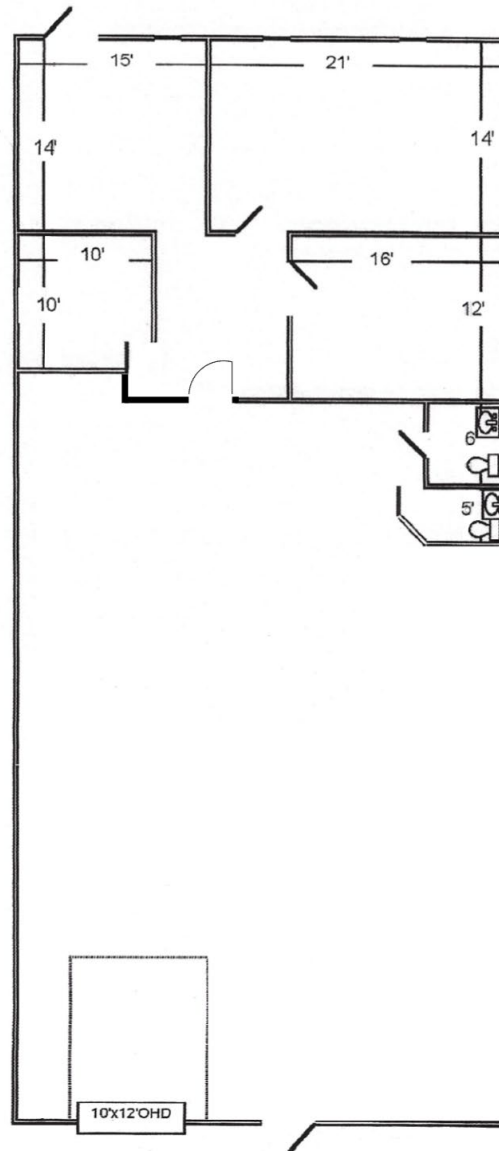
Building
1120

Suite F

2,880 SF



AVAILABLE NOW



BUILDING 1120 | **SUITE F: 2,880 SF**



**CUSHMAN &
WAKEFIELD**

**Colorado Springs
Commercial**

AARON HORN

Sr Managing Director
+1 719 330 4162
ahorn@coscommercial.com

HEATHER MCKEEN

Director
+1 719 568 1389
hmckeen@coscommercial.com

©2025 Cushman & Wakefield. All rights reserved. The material in this presentation has been prepared solely for information purposes, and is strictly confidential. Any disclosure, use, copying or circulation of this presentation (or the information contained within it) is strictly prohibited, unless you have obtained Cushman & Wakefield's prior written consent. The views expressed in this presentation are the views of the author and do not necessarily reflect the views of Cushman & Wakefield. Neither this presentation nor any part of it shall form the basis of, or be relied upon in connection with any offer, or act as an inducement to enter into any contract or commitment whatsoever. NO REPRESENTATION OR WARRANTY IS GIVEN, EXPRESS OR IMPLIED, AS TO THE ACCURACY OF THE INFORMATION CONTAINED WITHIN THIS PRESENTATION, AND CUSHMAN & WAKEFIELD IS UNDER NO OBLIGATION TO SUBSEQUENTLY CORRECT IT IN THE EVENT OF ERRORS.



5 MINUTES TO
I-25



12 MINUTES TO
DOWNTOWN



22 MINUTES TO
AIRPORT