



CUSHMAN &
WAKEFIELD

Colorado Springs
Commercial

Adobe Court Business Park

3302-3372 ADOBE COURT COLORADO SPRINGS, CO 80907

LEASE RATE: \$13.00/SF/YR NNN

NNN: (2025 Est.) A & B Block: \$3.79/SF

C Block: \$5.26/SF

CLEAR HEIGHT: 16' - 18'

DOORS: (1) 10'x12' Drive-In Doors

PARKING: 1/1,000 RSF

ZONING: M-1

SIGNAGE: On building signage available

#115-120
4,800 SF

Approx. gross monthly rent
\$6,500/mo

#3332
1,750 SF

Approx. gross monthly rent
\$2,370/mo

#3344
1,750 SF

Approx. gross monthly rent
\$2,370/mo

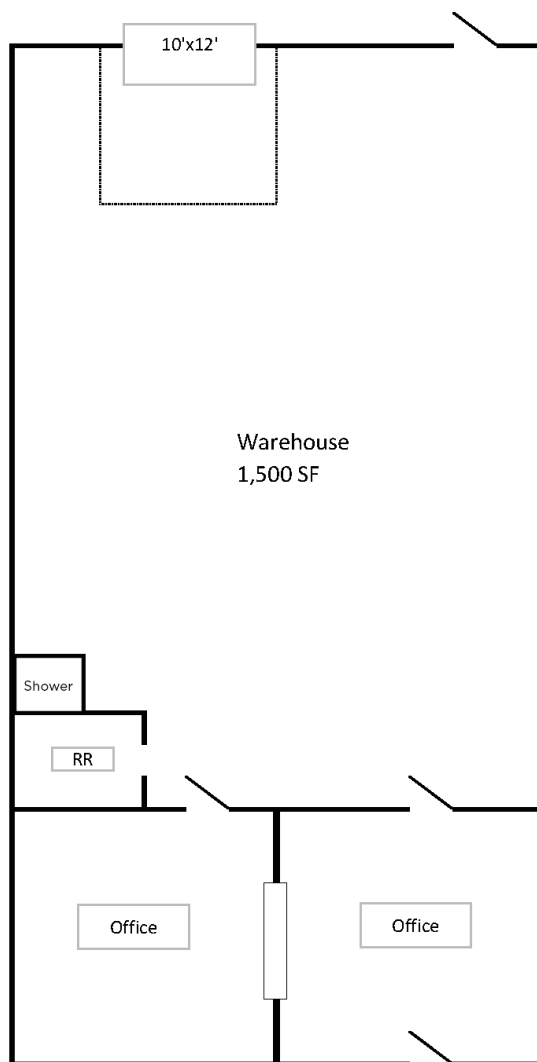


Site Plan



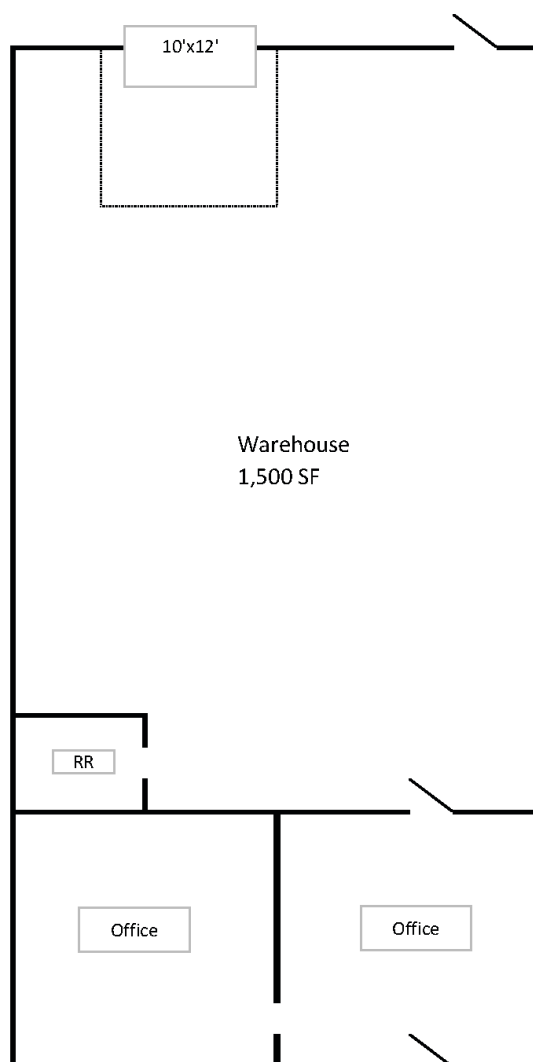
SUITE 3332

1,750 SF AVAILABLE



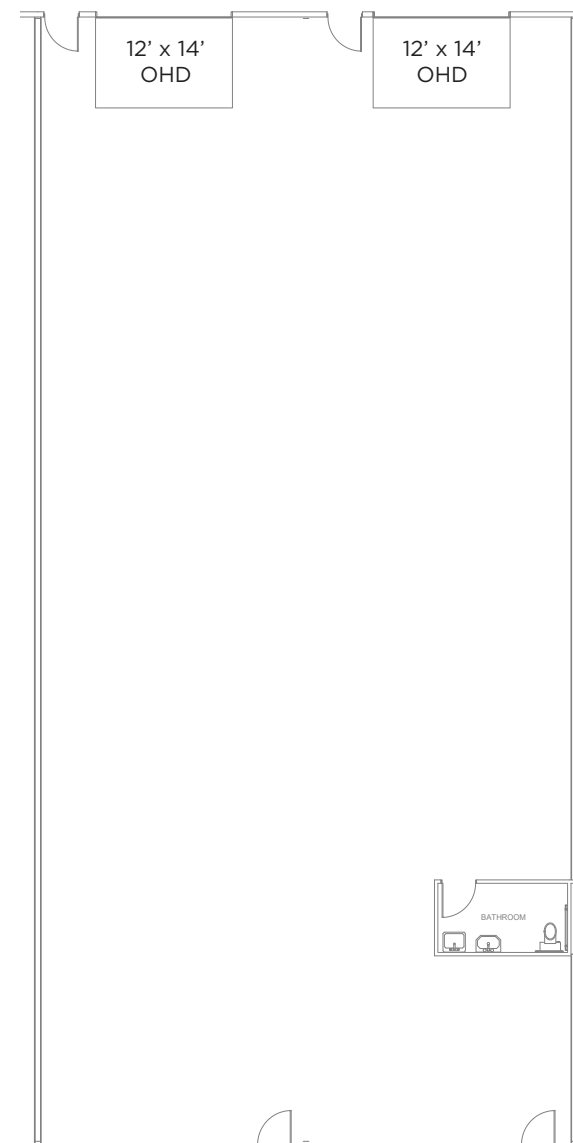
SUITE 3344

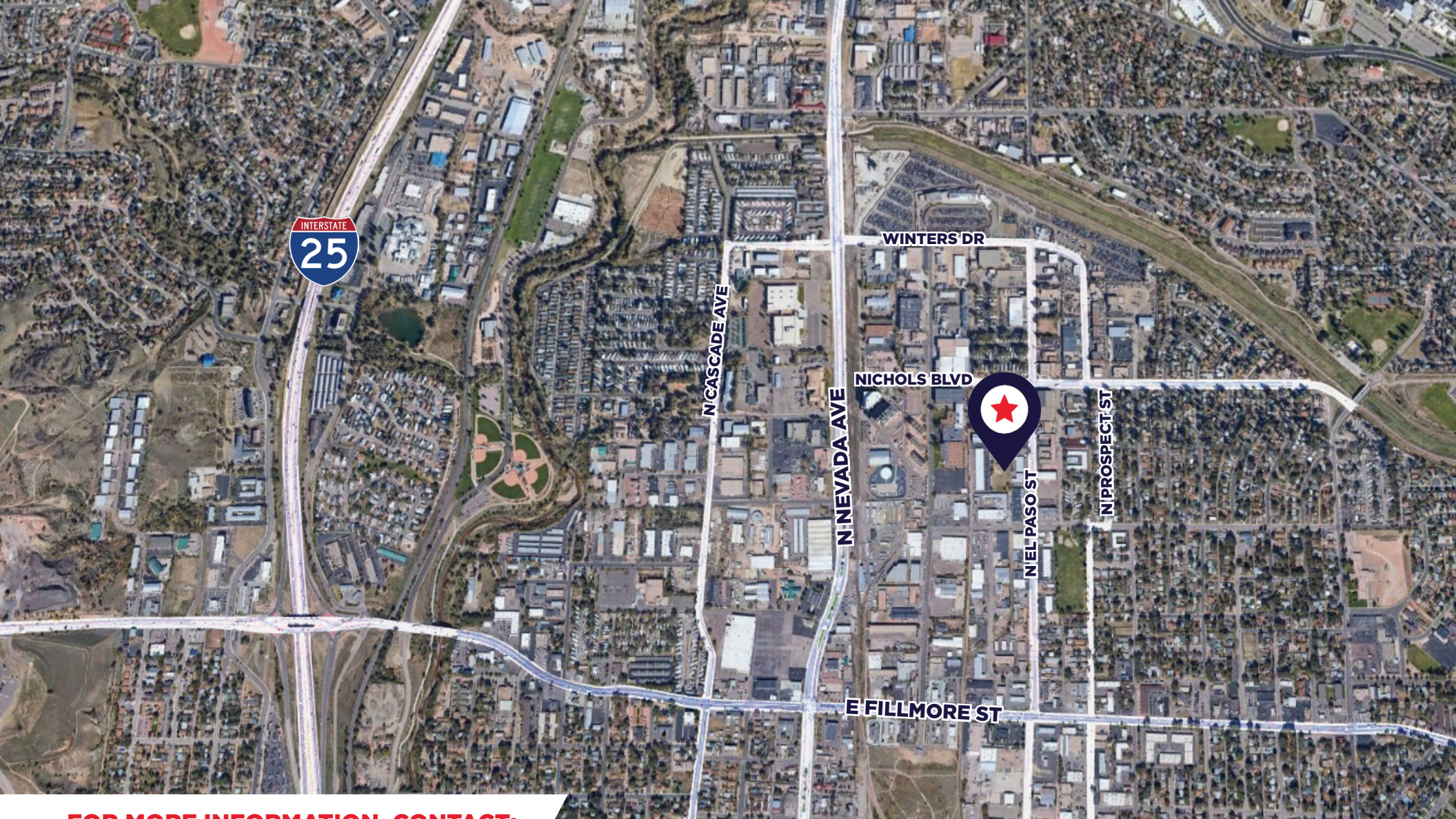
1,750 SF AVAILABLE



3372 ADOBE CT SUITE 115-120

4,800 SF AVAILABLE





FOR MORE INFORMATION, CONTACT:



**Colorado Springs
Commercial**

AARON HORN

Sr, Managing Director

+1 719 418 4070

ahorn@coscommercial.com

HEATHER MCKEEN

Director

+1 719 418 4062

hmckeen@coscommercial.com

©2025 Cushman & Wakefield. All rights reserved. The material in this presentation has been prepared solely for information purposes, and is strictly confidential. Any disclosure, use, copying or circulation of this presentation (or the information contained within it) is strictly prohibited, unless you have obtained Cushman & Wakefield's prior written consent. The views expressed in this presentation are the views of the author and do not necessarily reflect the views of Cushman & Wakefield. Neither this presentation nor any part of it shall form the basis of, or be relied upon in connection with any offer, or act as an inducement to enter into any contract or commitment whatsoever. NO REPRESENTATION OR WARRANTY IS GIVEN, EXPRESS OR IMPLIED, AS TO THE ACCURACY OF THE INFORMATION CONTAINED WITHIN THIS PRESENTATION, AND CUSHMAN & WAKEFIELD IS UNDER NO OBLIGATION TO SUBSEQUENTLY CORRECT IT IN THE EVENT OF ERRORS.