

207 N CHELTON RD

COLORADO SPRINGS, CO 80909



FOR LEASE | SUITE 140 4,100 SF



**CUSHMAN &
WAKEFIELD**

**Colorado Springs
Commercial**

207 N CHELTON RD

COLORADO SPRINGS, CO 80909



10,240 SF
BUILDING SIZE



1.08 ACRES
SITE AREA



20'
CLEAR HEIGHT



3-PHASE
POWER



(1) 12' x 12' OHD
(1) 12' x 16' OHD
TOTAL LOADING



MX-L
ZONING



4,100 SF
AVAILABLE SPACE



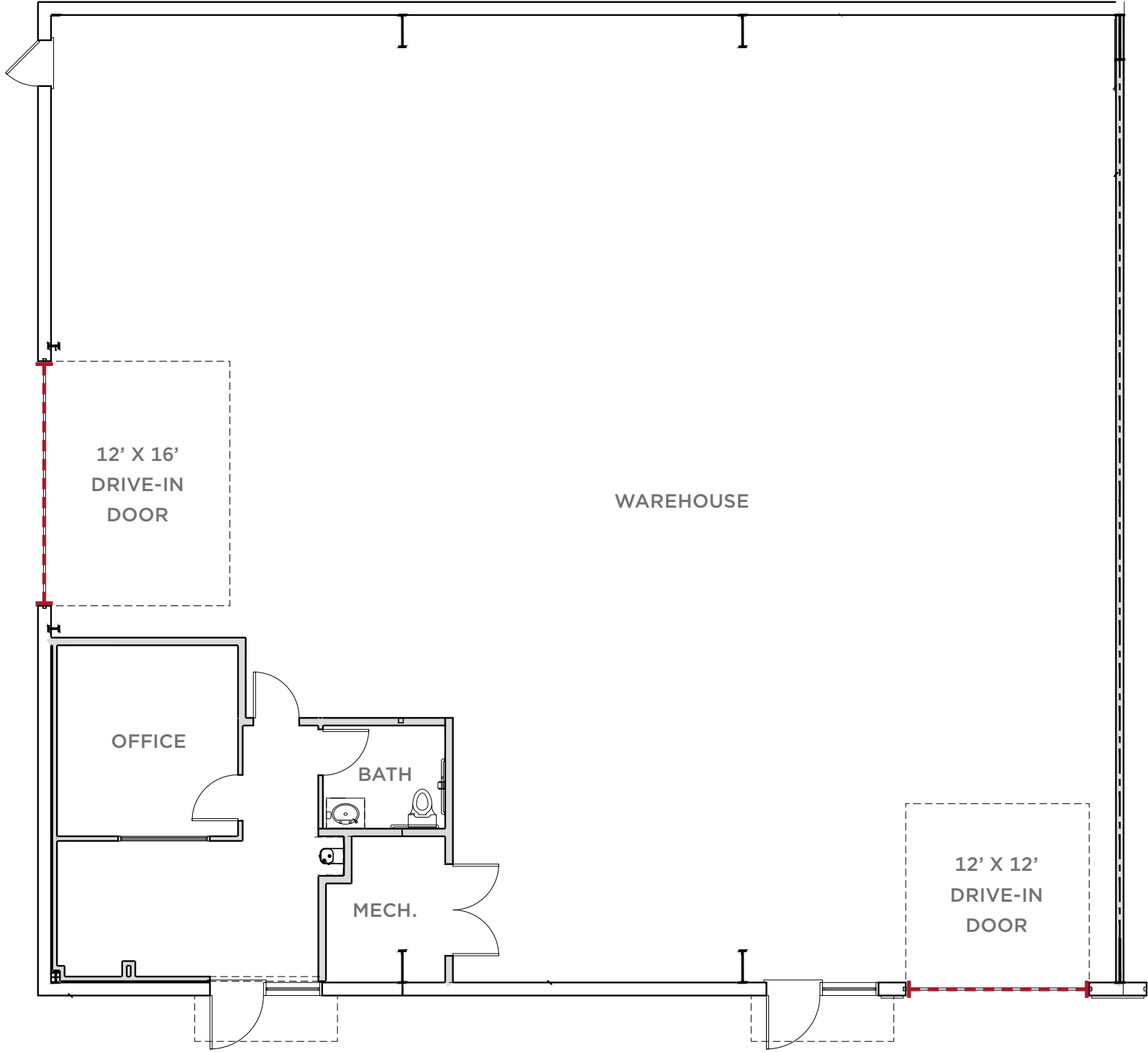
\$15.00 PER RSF NNN
LEASE RATE



\$2.95/SF (2025 EST.)
EXPENSES

MODERN FUNCTIONALITY IN A PRIME CENTRAL LOCATION

Built in 2021, the property features two oversized overhead doors, high ceilings, and a flexible open layout ideal for light industrial, warehouse, or distribution needs. Its convenient location provides quick access to major roads, making it easy to reach customers, suppliers, and local amenities. This is a perfect opportunity for growing businesses seeking clean, efficient, and well-located space.



FLOORPLAN

207 N CHELTON RD
COLORADO SPRINGS, CO 80909



**CUSHMAN &
WAKEFIELD**

**Colorado Springs
Commercial**

Contact

PATRICK KERSCHER

Sr Managing Director

+1 719 418 4065

patrick@coscommercial.com