

4295 NORTHPARK DR

COLORADO SPRINGS, CO 80907



8,495 SF FOR LEASE | **OFFICE/WAREHOUSE**



**Colorado Springs
Commercial**

BUILDING HIGHLIGHTS

4295 Northpark Dr is well-suited for industrial users seeking functional space. With one dock-high door, one drive-in door, and 18' clear height, this property is a hard-to-find space in the Colorado Springs market.

Located just off Garden of the Gods Road with quick access to I-25, the property provides strong regional connectivity and nearby amenities.



BUILDING SIZE

18,432 SF



SPACE AVAILABLE

8,495 SF



YEAR BUILT

1975



ZONING

LI



PARKING

1.09 per
1,000 RSF



LEASE RATE

\$12.50 per SF
NNN



NNN EXPENSES

\$3.34/SF
(2025 EST.)



AVAILABLE LOADING

(1) DRIVE-IN
(1) DOCK-HIGH



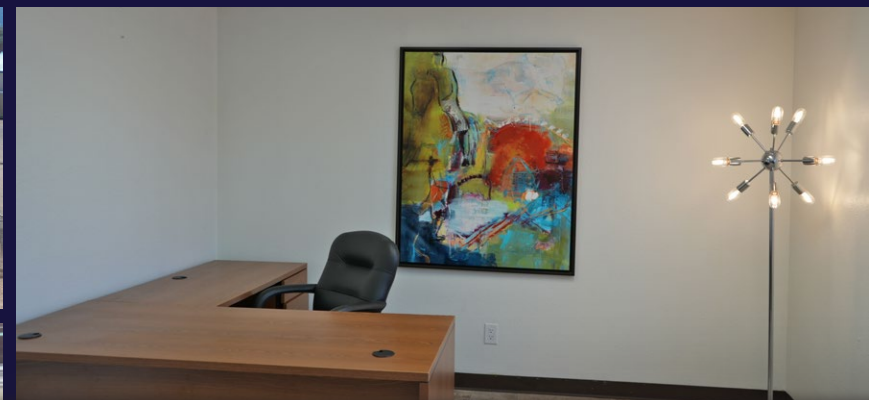
CLEAR HEIGHT

18'



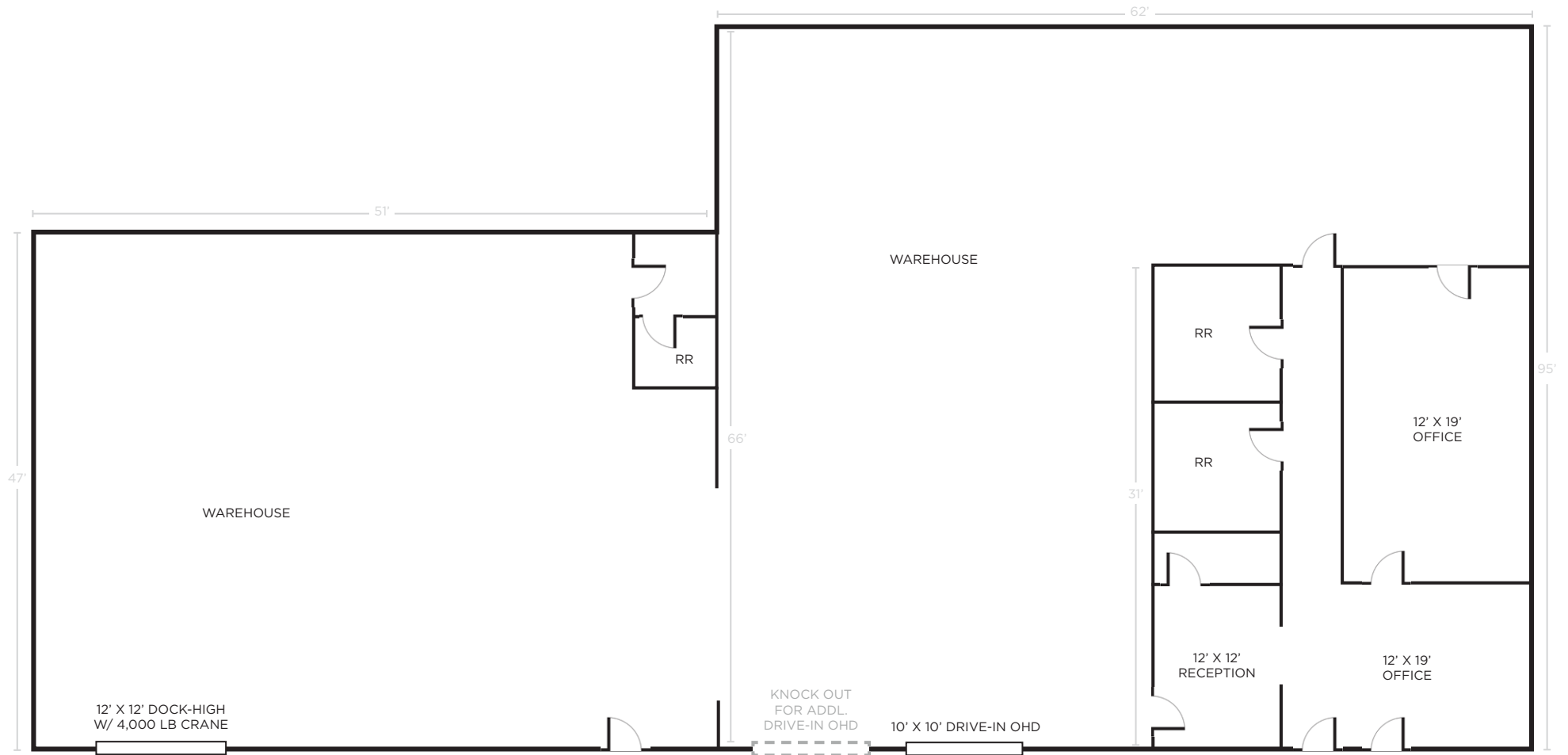
POWER

1600 AMPS
3PHASE/4WIRE
120/208 VOLTS

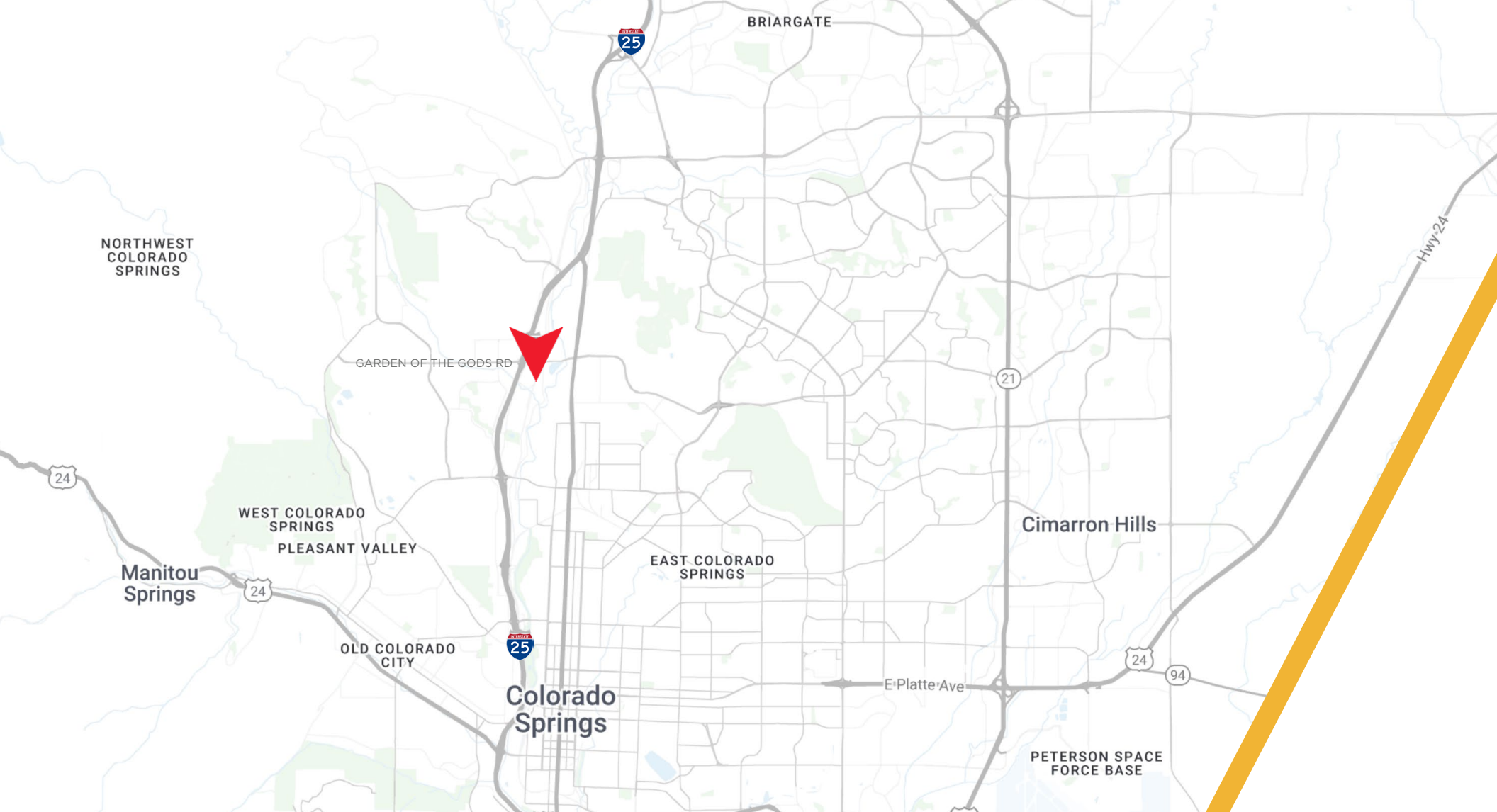


4295 NORTHPARK DR
COLORADO SPRINGS, CO 80907

FLOORPLAN



4295 NORTHPARK DR
COLORADO SPRINGS, CO 80907



CONTACT

AARON HORN

Sr Managing Director

+1 719 418 4070

ahorn@coscommercial.com

HEATHER MCKEEN

Director

+1 719 418 4062

hmckeen@coscommercial.com

90 S Cascade Ave Suite 1150

Colorado Spings, CO 80903

Direct +1 719 634 1500

coscommercial.com

©2025 Cushman & Wakefield. All rights reserved. The information contained in this communication is strictly confidential. This information has been obtained from sources believed to be reliable but has not been verified. NO WARRANTY OR REPRESENTATION, EXPRESS OR IMPLIED, IS MADE AS TO THE CONDITION OF THE PROPERTY (OR PROPERTIES) REFERENCED HEREIN OR AS TO THE ACCURACY OR COMPLETENESS OF THE INFORMATION CONTAINED HEREIN, AND SAME IS SUBMITTED SUBJECT TO ERRORS, OMISSIONS, CHANGE OF PRICE, RENTAL OR OTHER CONDITIONS, WITHDRAWAL WITHOUT NOTICE, AND TO ANY SPECIAL LISTING CONDITIONS IMPOSED BY THE PROPERTY OWNER(S). ANY PROJECTIONS, OPINIONS OR ESTIMATES ARE SUBJECT TO UNCERTAINTY AND DO NOT SIGNIFY CURRENT OR FUTURE PROPERTY PERFORMANCE.



**Colorado Springs
Commercial**