



CUSHMAN &
WAKEFIELD

Colorado Springs
Commercial

OFFICE SPACE FOR LEASE | 3,252 RSF AVAILABLE



1160 LAKE PLAZA DR

COLORADO SPRINGS, CO 80906



1160 LAKE PLAZA DR

COLORADO SPRINGS, CO 80906

Position your team at 1160 Lake Plaza—an easy-to-reach office address tucked just off the Lake Ave corridor with everyday conveniences at your doorstep. The property sits moments from a dense mix of shopping, dining, fitness, banking, and service retailers, giving employees and clients quick access to coffee, lunch spots, and errands before or after meetings. Central Colorado Springs location with straightforward connections to major arterials makes commuting simple from every direction.

HIGHLIGHTS

- Move-in-ready professional office space with efficient layouts
- Walkable/quick drive to daily-needs retail, restaurants, grocery, banking, and fitness
- Minutes to key arterials for fast access across Colorado Springs
- Ideal for medical-adjacent, professional services, creative, or admin uses
- Clean, well-kept common areas in a quiet professional setting
- Strong daytime population with nearby employment centers



15,165 SF
Building Size



3.3 per 1,000 RSF
Parking Ratio



2004
Year Built



PBC
Zoning



Monument Signage
Available



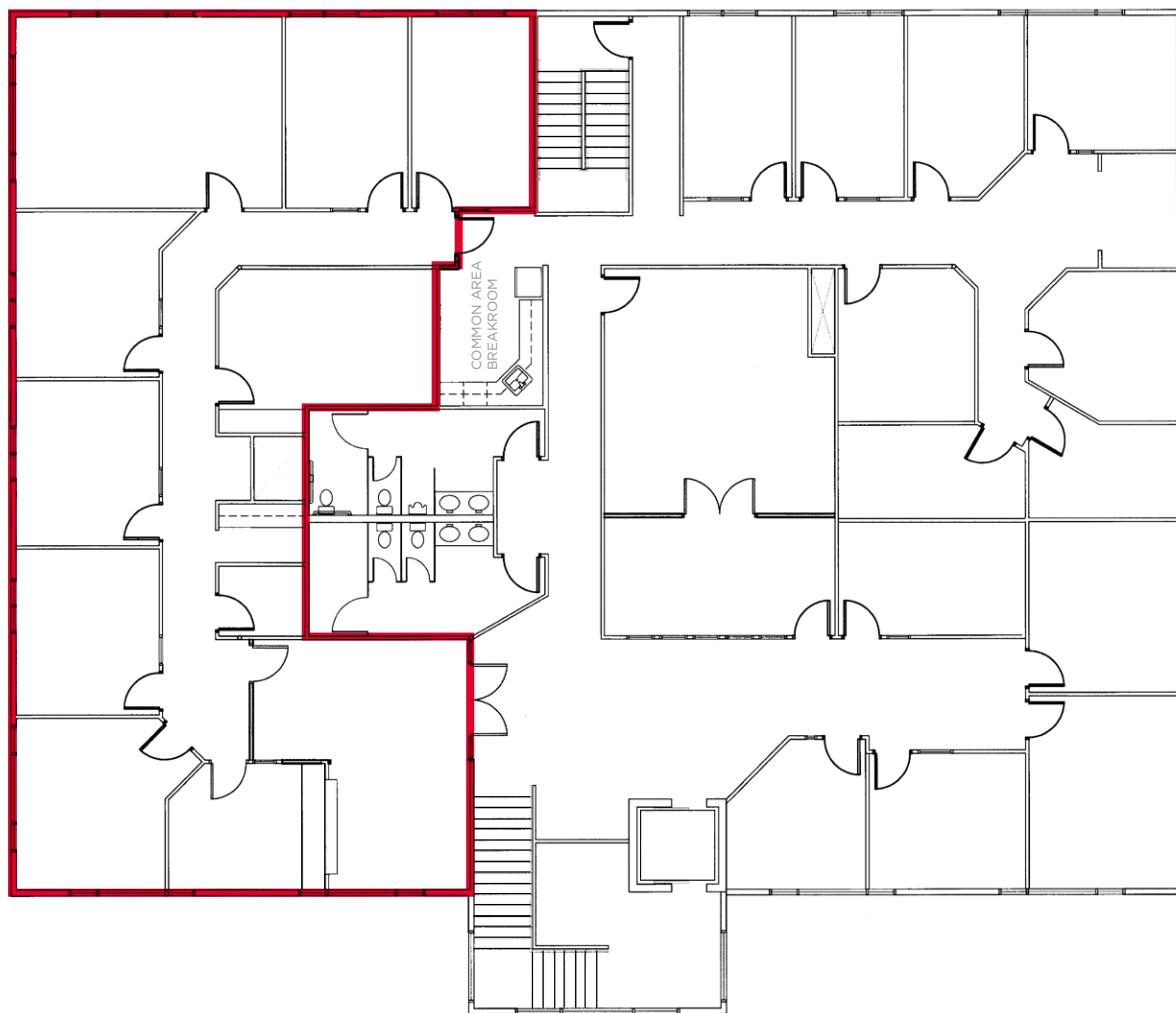
3,252 SF
Available Space

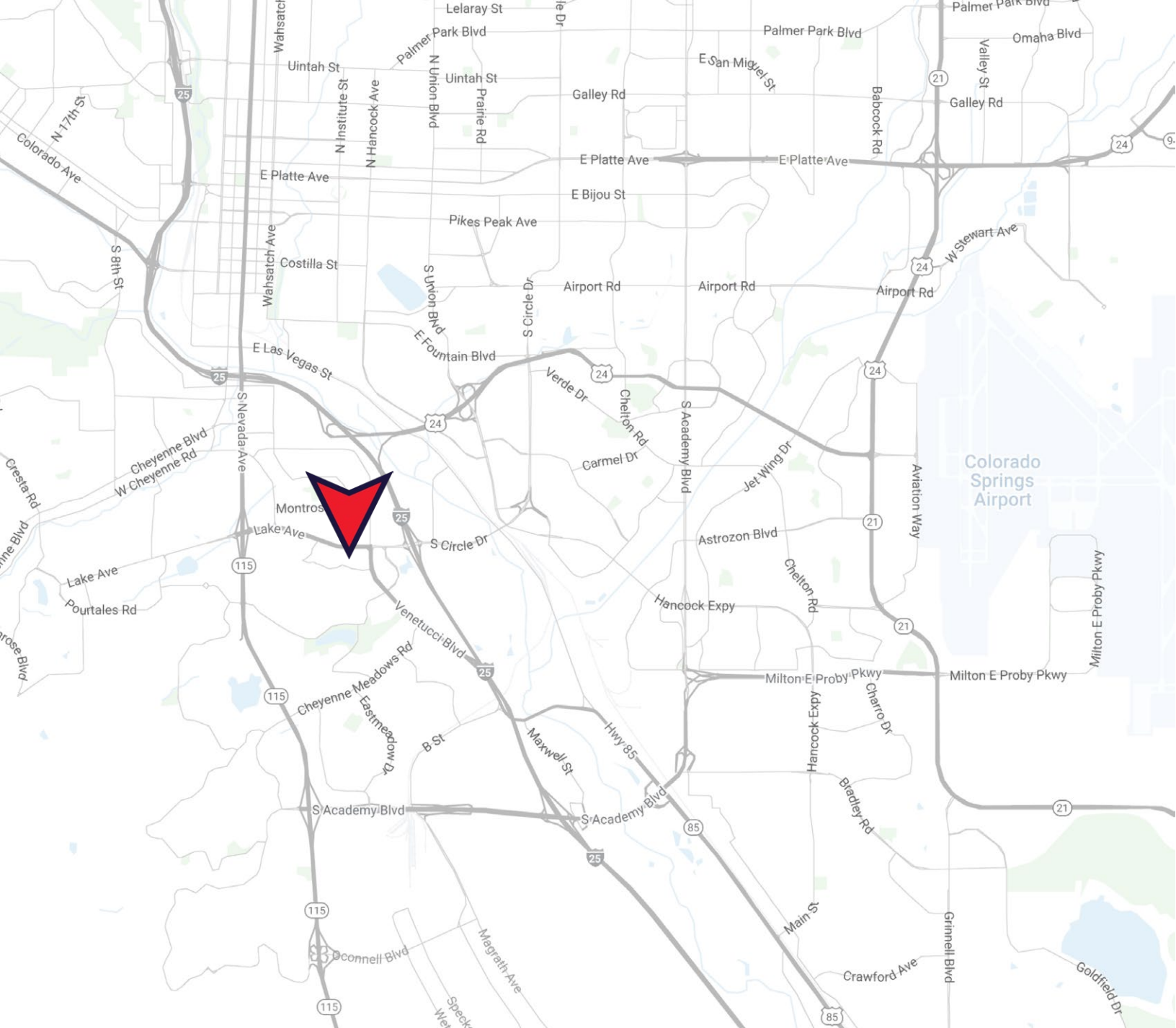


Contact Broker
Lease Rate

SUITE 200

2nd Floor FLOORPLAN





DRIVE TIMES



5 Min. | I-25



23 Min. | Interquest Pkwy



12 Min. | Downtown Colorado Springs



62 Min. | Denver Tech Center

DAVID SCHROEDER

Managing Director

+1 719 418 4066

dschroeder@coscommercial.com



**CUSHMAN &
WAKEFIELD**

**Colorado Springs
Commercial**

90 S Cascade Ave., Suite 1150

Colorado Springs, CO 80903

+1 719 634 1500

coscommercial.com

©2025 Cushman & Wakefield. All rights reserved. The information contained in this communication is strictly confidential. This information has been obtained from sources believed to be reliable but has not been verified. NO WARRANTY OR REPRESENTATION, EXPRESS OR IMPLIED, IS MADE AS TO THE CONDITION OF THE PROPERTY (OR PROPERTIES) REFERENCED HEREIN OR AS TO THE ACCURACY OR COMPLETENESS OF THE INFORMATION CONTAINED HEREIN, AND SAME IS SUBMITTED SUBJECT TO ERRORS, OMISSIONS, CHANGE OF PRICE, RENTAL OR OTHER CONDITIONS, WITHDRAWAL WITHOUT NOTICE, AND TO ANY SPECIAL LISTING CONDITIONS IMPOSED BY THE PROPERTY OWNER(S). ANY PROJECTIONS, OPINIONS OR ESTIMATES ARE SUBJECT TO UNCERTAINTY AND DO NOT SIGNIFY CURRENT OR FUTURE PROPERTY PERFORMANCE.